

IGUANA Aero Blade Fitting Instructions.

1. To ensure maximum performance, thoroughly clean the windscreen before installation.

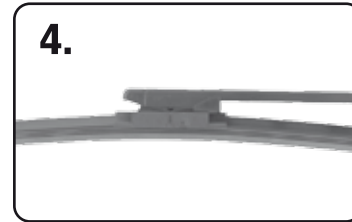
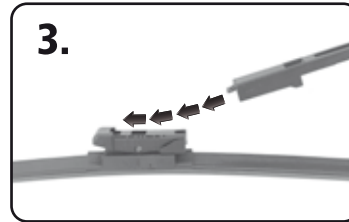
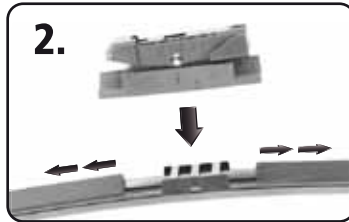
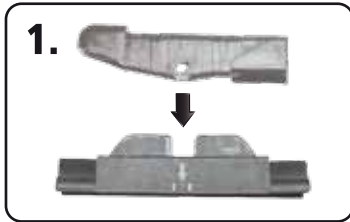
WE DO NOT RECOMMEND THE USE OF SILICONE BASED WATER REPELLENTS ON YOUR WINDSCREEN OR RINSE AIDS WHEN WASHING YOUR CAR AS THEY MAY REDUCE THE PERFORMANCE OF YOUR BLADES WITH REPEATED APPLICATION.

2. Remove your Iguana Aero Blade from its protective sleeve/tray.
3. Follow the appropriate fitting instructions below or overleaf to securely install and effectively control your new Iguana.

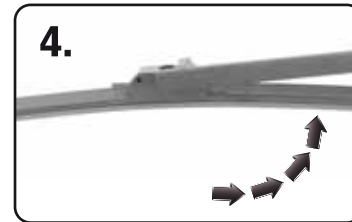
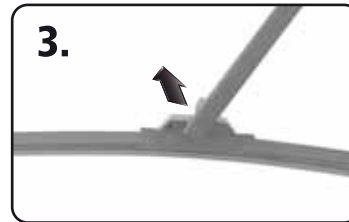
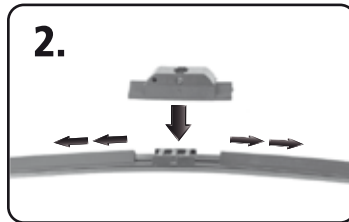
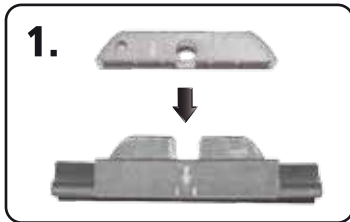


DO NOT START WIPER BLADES ON A FROZEN, OR SNOW COVERED SCREEN, THIS WILL DAMAGE THE BLADE AND POSSIBLY THE SCREEN.

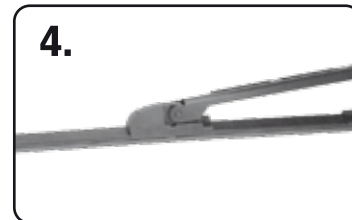
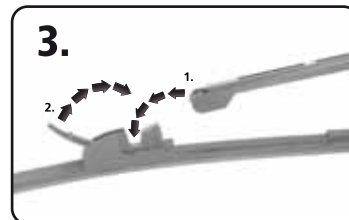
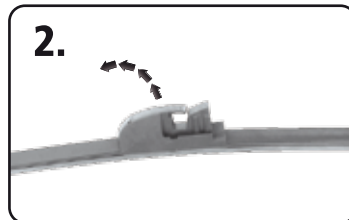
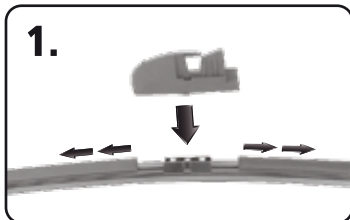
IGA-1



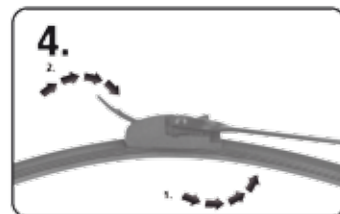
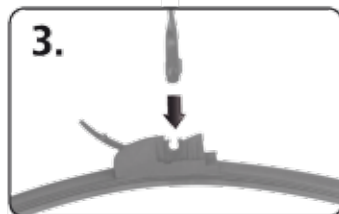
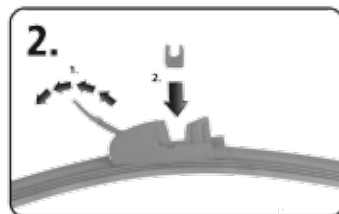
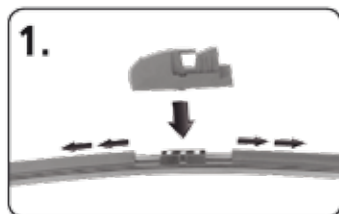
IGA-2



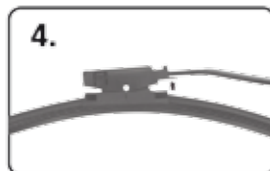
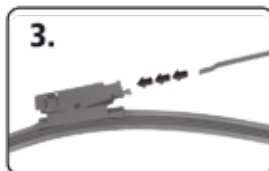
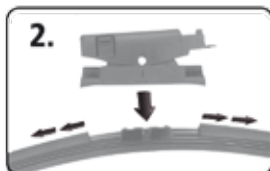
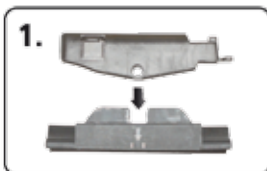
IGA-3



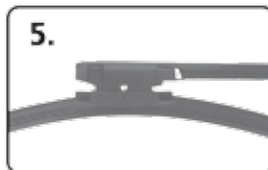
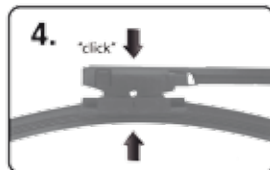
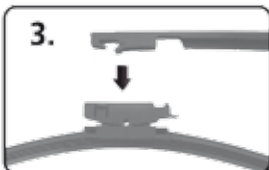
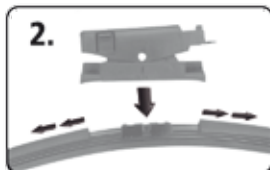
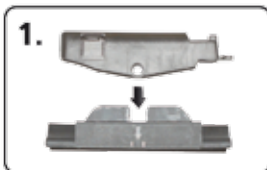
IGA-3
(Renault Scenic)



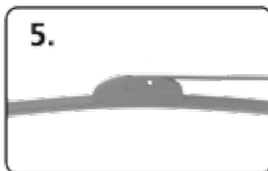
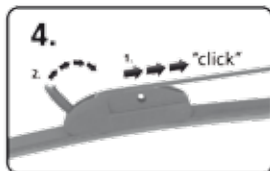
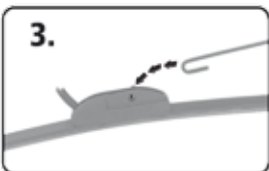
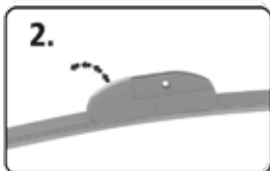
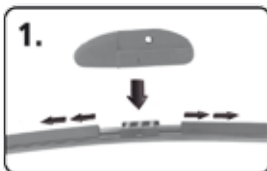
IGA-4
(Bayonet)



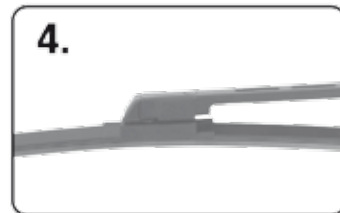
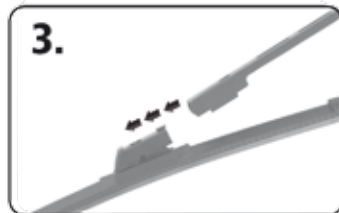
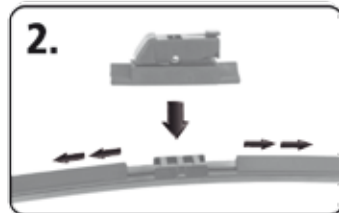
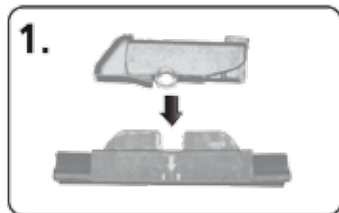
IGA-4
(Audi)



IGA-5



IGA-6
&
IGA-8



DO NOT START WIPER BLADES ON A FROZEN, OR SNOW COVERED SCREEN, THIS WILL DAMAGE THE BLADE AND POSSIBLY THE SCREEN.



Any manufacturer's names are for reference purposes only. All images are protected under copyright and cannot be distributed without the written consent of the originator.